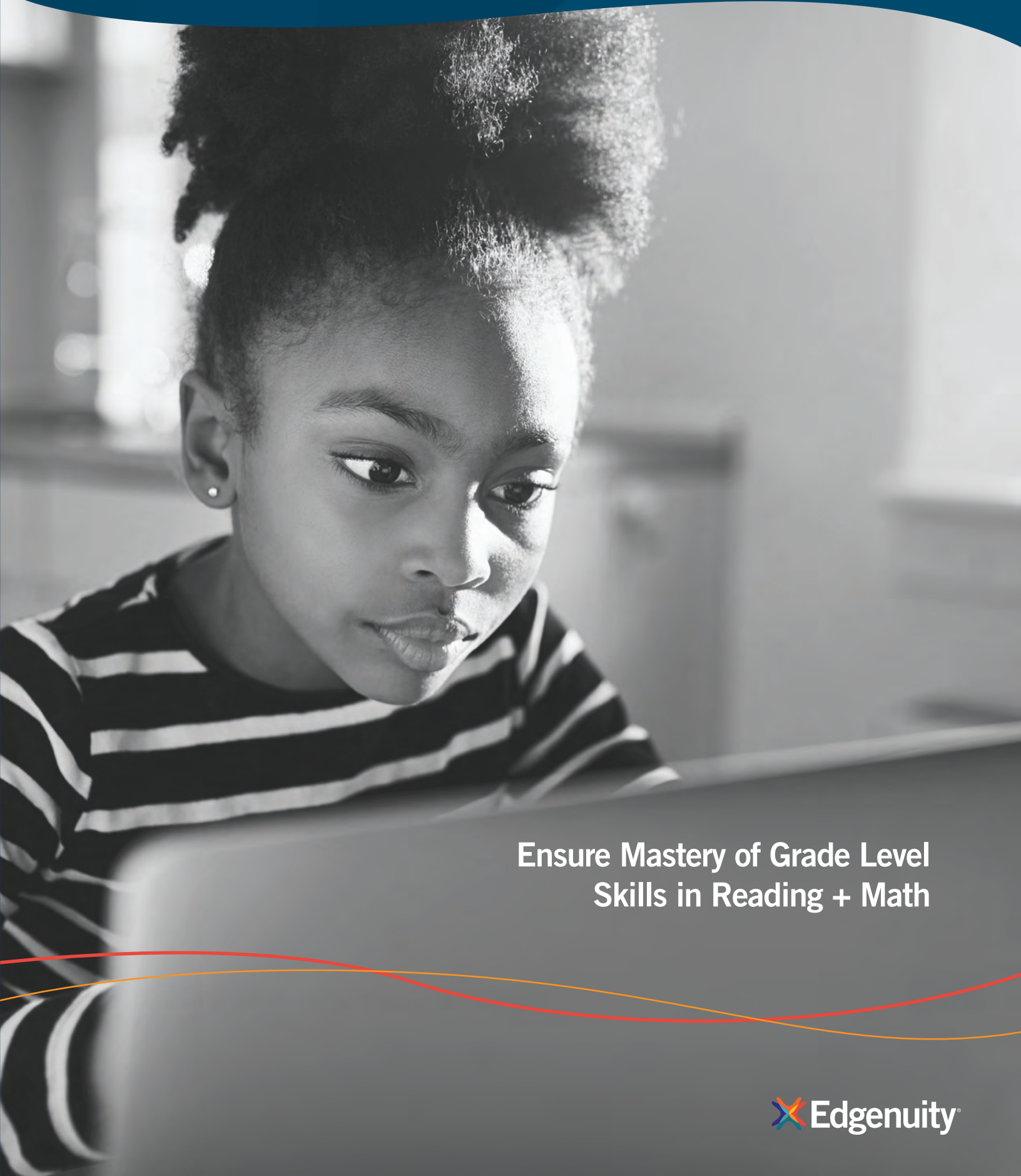


Hybridge®



Ensure Mastery of Grade Level
Skills in Reading + Math

 Edgenuity®

Blended Learning for Elementary Schools



Edgenuity®
Hybridge®

Reinforce essential grade-level skills in reading and math.

Elementary school teachers need engaging, personalized tools they can use throughout the school day to ensure students master grade-level skills in reading and math.

Hybridge® is a supplemental learning program that offers dynamic online content to build the foundational skills students need to be successful learners today and in the future. This flexible program aligns to Common Core and state standards and can easily be used alongside classroom lessons to offer an easy transition to blended learning.

How It Works



ASSIGN INSTRUCTION

Teachers can choose from a lesson-driven model that aligns to their class or district scope and sequence. Or, teachers can enable individual learning progressions based on diagnostic results so each student receives precisely the right instruction and practice when it is needed.

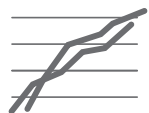
Schools can also choose to import data from Renaissance Learning® STAR™, NWEA™ MAP®, or Scantron® Performance Series® assessments to create prescriptive learning paths that require no additional testing.



PROVIDE ENGAGING LESSONS

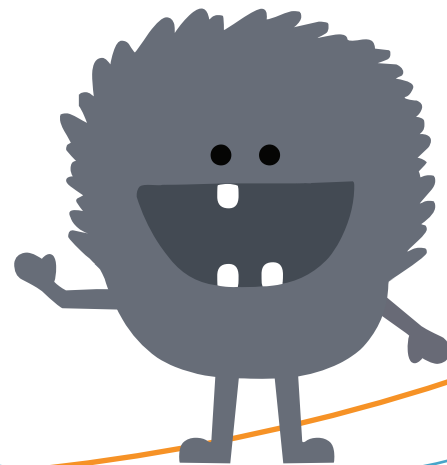
Dynamic, interactive, and age-appropriate videos, animation, and manipulatives deliver explicit instruction, guided practice, independent practice, just-in-time reteaching, and assessments. Students also receive practice with several technology-enhanced tasks that they will encounter on high-stakes exams.

Hybridge offers continuous learning support, including answer-specific feedback and non-repetitive reteaching, so when a student doesn't understand a skill, he or she doesn't just see the same thing over again.



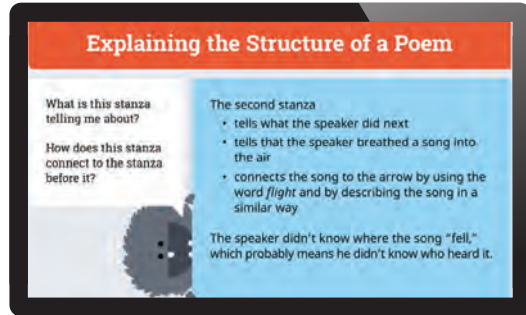
MONITOR PROGRESS

A suite of reports in Hybridge track student progress toward standards mastery, inform small group instruction, and help teachers plan for one-on-one time with students.



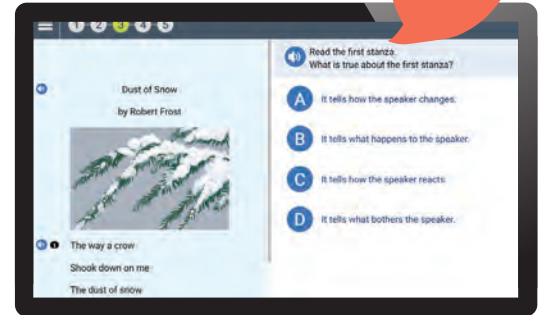
Supportive Instructional Model

Every lesson in Hybridge includes a gradual-release instructional model so students receive both the instruction and practice they need to master each skill.



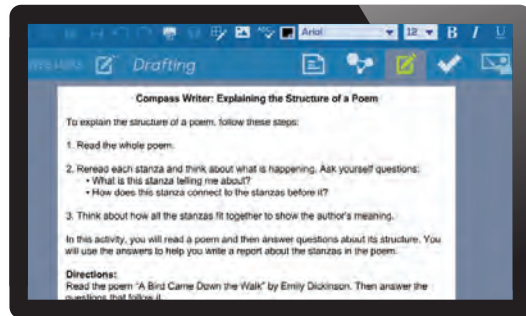
DIRECT INSTRUCTION

Engaging onscreen instructional videos teach students about the skill or concept. Students receive examples, modeling, and real-world contexts in a dynamic and fun environment.



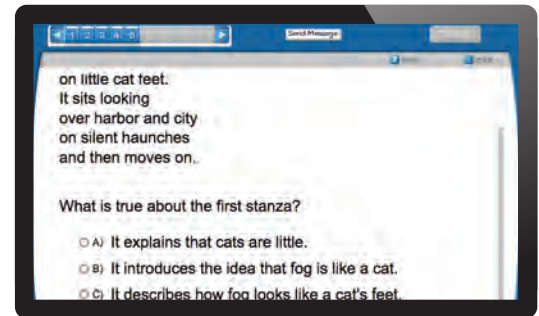
SUPPORTED PRACTICE

Students then have an opportunity to practice the skill they were just taught. Scaffolds, like hints and reteaching, help students become competent at the skill without getting frustrated.



INDEPENDENT PRACTICE

As students work through an activity, the supports and scaffolds are reduced, so students have more of a chance to work on their own. Students will still receive immediate feedback if they make a mistake, but the feedback becomes more limited in scope.



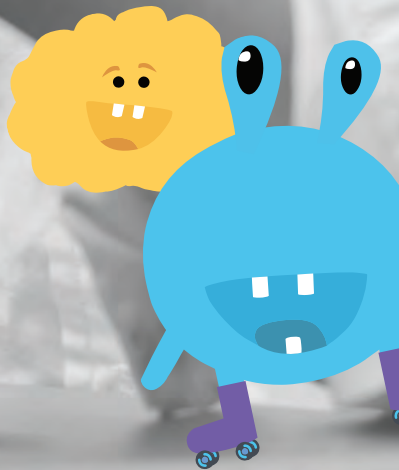
ASSESSMENTS

Activity quizzes and unit tests inform continuous feedback for students and teachers. This way, if additional intervention is needed, it is known immediately so the student isn't stuck in a loop of frustration and can accelerate forward.

Extended Reading Opportunities

Hybridge integrates with myON®, a personalized digital literacy platform, that gives each student access to a bookshelf of fiction and nonfiction books tailored to his or her reading level. When students have access to interesting texts at their level, they can experience reading success and begin to develop a lifelong appreciation for literacy.





edgenuity.com/hybrid

877.7CLICKS

solutions@edgenuity.com

NWEA and MAP are registered trademarks of Northwest Evaluation Association.

Scantron and Performance Series are trademarks of the Scantron Corporation.

Renaissance STAR is a trademark of Renaissance Learning, Inc.

myON is a trademark of Capstone Publishers, Inc.

**Edgenuity**
where learning clicks

Copyright © Edgenuity Inc.